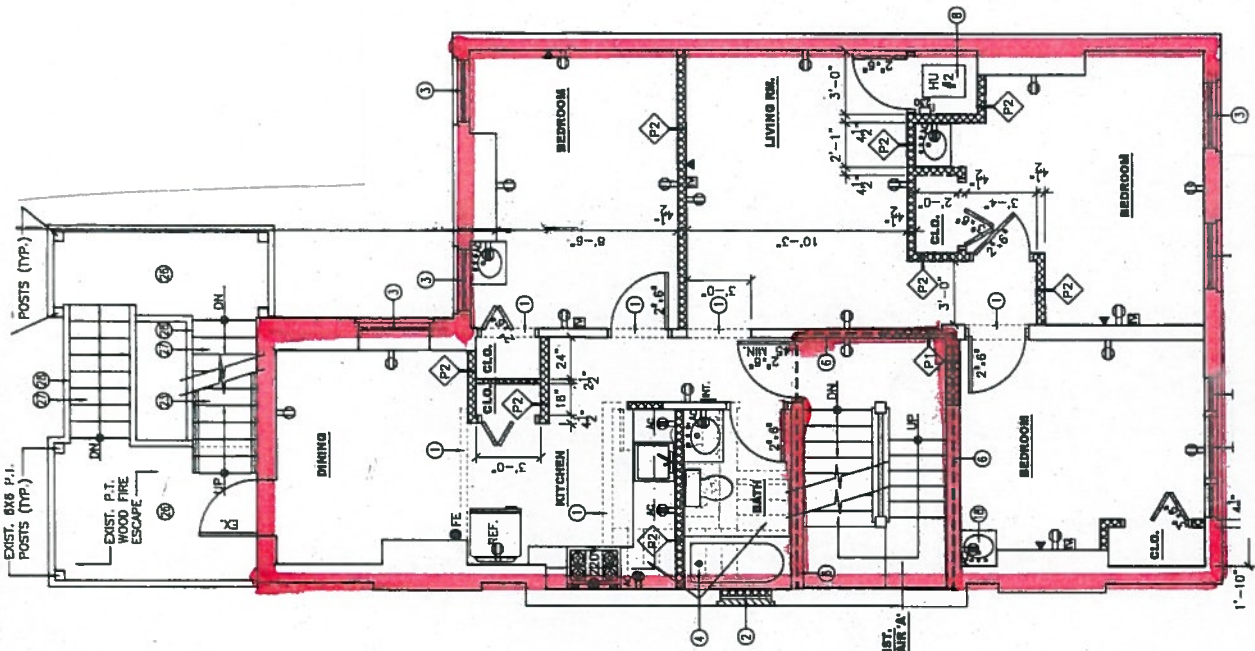


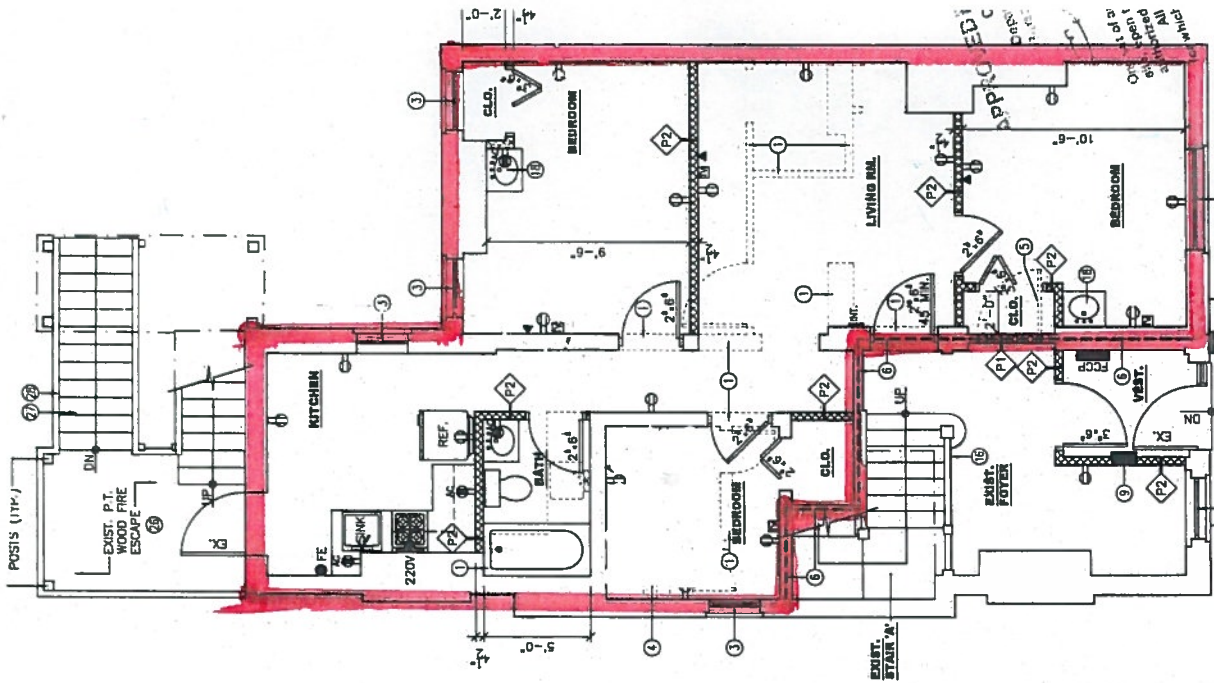
APT #3 - 3 BR

THIRD FLOOR PLAN



APT #2 - 3 BR

SECOND FLOOR PLAN



APT #1 - 3 BR

FIRST FLOOR PLAN

ALTERATIONS TO 336 NORTH CRAIG STREET

EXIST. STAIR W.
EXIST. CONCRETE



BLDG. NO

